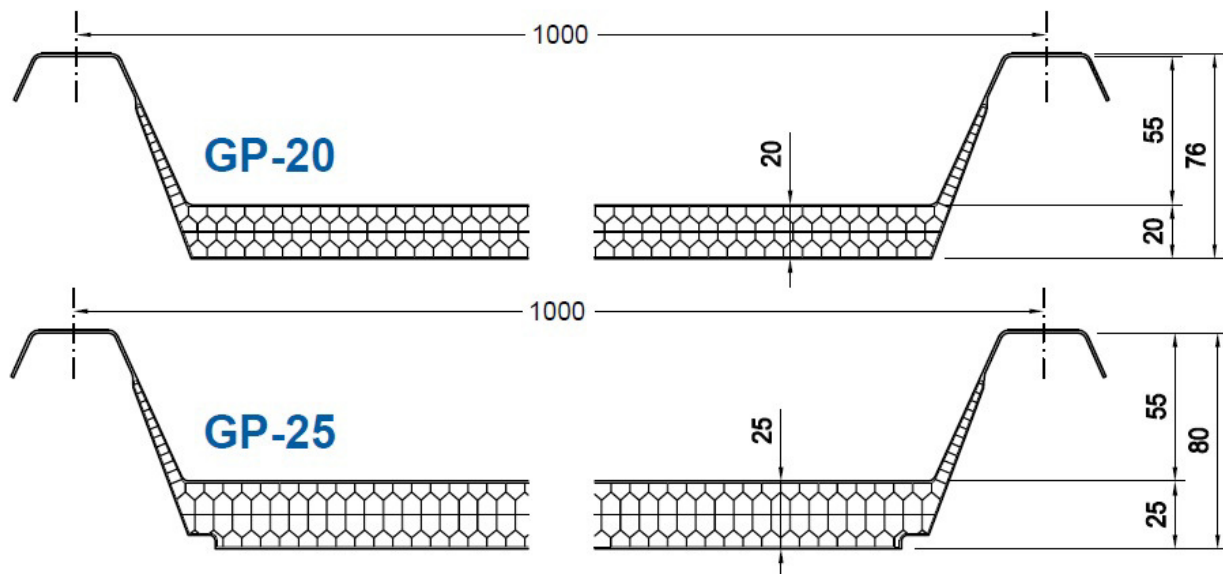


PRODUCT:

GP 20 (20mm thick)

GP 25 (25mm thick)

CROSS SECTION:



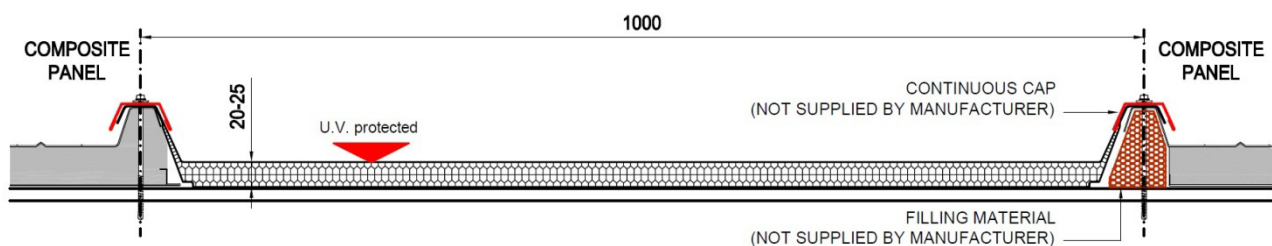
SPECIFICATIONS:

SHEET IN EXTRUDED MULTIWALL POLYCARBONATE, ~1000mm WIDE (USEFUL WIDTH) and 20-25 mm THICK, with HONEYCOMB STRUCTURE. FLAT SECTION WITH 76-80mm high SIDE WAVES.

SHEETS ARE SUPPLIED TO THE EXACT LENGTH REQUESTED, WITH EDGES SEALED WITH AN ALUMINIUM FOIL TAPE;
FIRE RATING: EUROCLASS B s1 d0.

- **USE:** REALIZATION OF **SKYLIGHT** AND **ROOF COVERING** BETWEEN FLAT AND CURVED COMPOSITE PANELS
FOR CURVED CANOPY APPLICATION, THE SHEET IS SUPPLIED PRE-CURVED TO 3,5 or 6m RADIUS
- **ACCESSORIES:** THE SYSTEM IS COMPLETED BY ACCESSORIES
(FOR MORE DETAILS ON THE ACCESSORIES PLEASE CONTACT THE MANUFACTURER).

DETAILS OF APPLICATION:



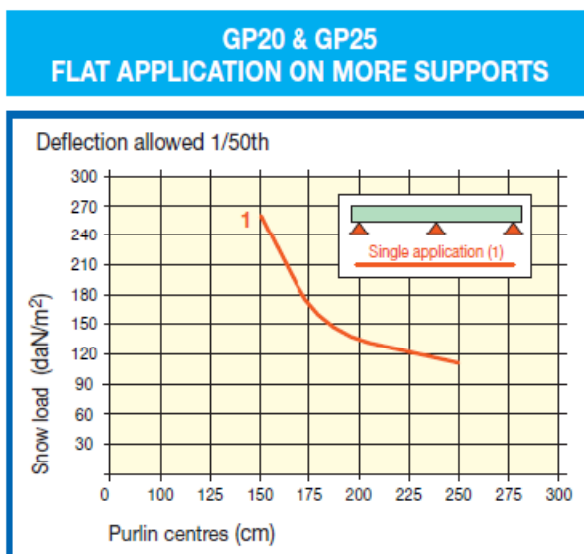
TECHNICAL DATA SHEET no.GP01 - Dec. 2016 (Rev.0)

Product: GP20 - 25

TECHNICAL CHARACTERISTICS:

DATA		UNIT	GP 20	GP 25
Thickness		mm	20	25
Sheet width		mm	1000 ± 5	
Corrugation		mm	2no side waves	
Height of wave		mm	76	80
Sheet length		m	Length to size (max. recommended length is 7,0m)	
Curvature radius		(R) m	Factory curving R 3,5 or 6,0m – Cold curving R +10m	
Colour		-	Satinized clear and Opal	
Sealing of sheet edges		-	Aluminium foil tape	
Inner construction		-	Honeycomb	
UV protection		-	On outer layer	
Fire rating		-	B s1 d0	
Temperature working range		°C	-40° / + 130°	
Linear thermal expansion		mm/mm°C	6,7 x10 ⁻⁵	
Resistance against chemicals use & maintenance		-	See our literature for specifications	
Thermal insulation		W/m²K	U= 1,70	U= 1,54
Light transmission	CLEAR	%	65±2	64±2
	OPAL	%	43±2	41±2
Solar factor	CLEAR	%	75±2	71±2
	OPAL	%	50±2	48±2
Shading coefficient	CLEAR	%	0,87±2	0,82±2
	OPAL	%	0,58±2	0,56±2
Warranty		-	10 years – See our Warranty for terms & conditions	

LOADING TABLE (Flat Application):



Responsibility clause: all technical information and recommendations are given in good faith and according our best knowledge. Nevertheless, not having any control over the end use of its materials, PolyPiù S.r.l. declines any responsibility for their application. The recommendations given do not relieve the Buyer to perform its own controls to determine the suitability of the materials to its own needs and to the regulations in force. PolyPiù S.r.l. reserves the right to amend products and specifications without prior notice.